



GeoGraphix® 2017.1

Experience performance that speaks volumes
With a completely integrated geoscience system

An advanced, affordable, integrated geoscience system

**Apply the latest geoscience
technology with GeoGraphix 2017.1**

GeoGraphix 2017.1 is all about enhancing your efficiency with tools derived by talking to our customers and persistent R&D in the face of challenging times. Our new release offers most advanced field planning, integrated 3D geomodeling and powerful petrophysical analysis making it the industry's most advanced, cost efficient tightly integrated geoscience system.

- **Performance:** Visualize changes to your interpretation in real time in an upgraded 3D environment
- **Tight Integration:** Enhance subsurface understanding through integrated geological, geophysical & field planning workflows
- **Decision Making:** Make better economic decisions by visualizing all the possibilities in one 3D scene

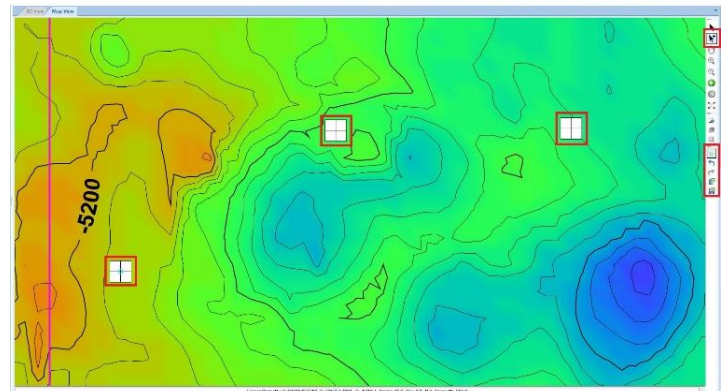
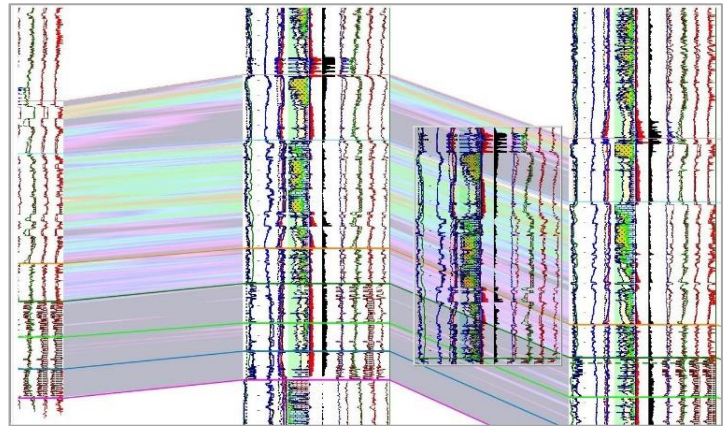
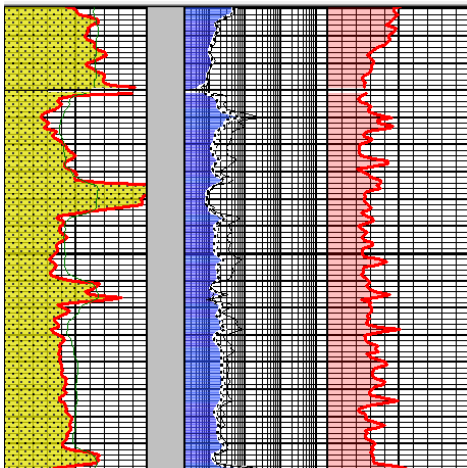


Geology

- Take your smartSECTION interpretations to a whole new level with GVERSE Geomodeling - an integrated environment for modeling that incorporates a newly built 3D View with map and cross sections.
- Work efficiently with larger projects in smartSECTION 64 bit.
- Pick and move the virtual interwell points as desired and easily commit the points to the database and model using the Quick Pick mode in Map View.
- Experience improved workflows by turning on or off all the fault polygons and/or intersections associated with modeled surfaces.

- Control the spread of the fault modeling and expand it to the extents of the data with Concavity Factor.
- Adjust the transparency level of the lithology fill to view what is behind the fills on the presentation log.
- Import new curves and merge them into an existing computed curves set instead of replacing them and use the new curves in petrophysical analysis.

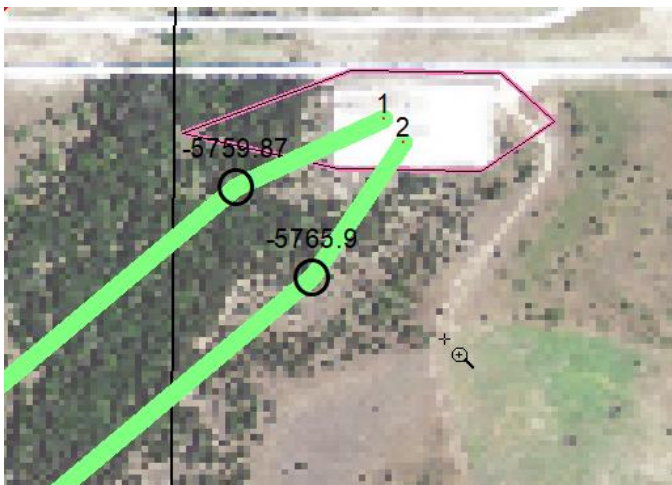
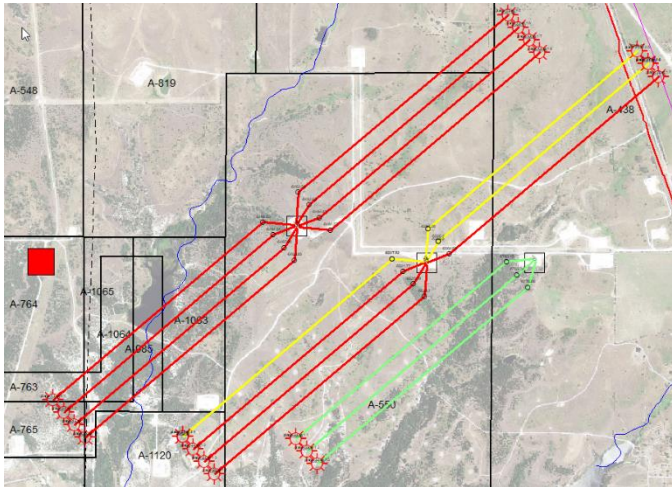
Correlation	Dept	Resistivity	Porosity
SP	MD	ResS(SFLU)	PHIN(N/A)
-100 mv	50	0.2 Ohmm 2000	0.45 -0.15
CAL(N/A)	16	ResM(LM)	RHOB
6	16	0.2 Ohmm 2000	2.0 gm/c3 3.0
GR		ResD(ILD)	DT(N/A)
0	150	0.2 Ohmm 2000	140 40
API			PEF(N/A)
Sandstone		<RT Blue Green Red>	0 10
			Red





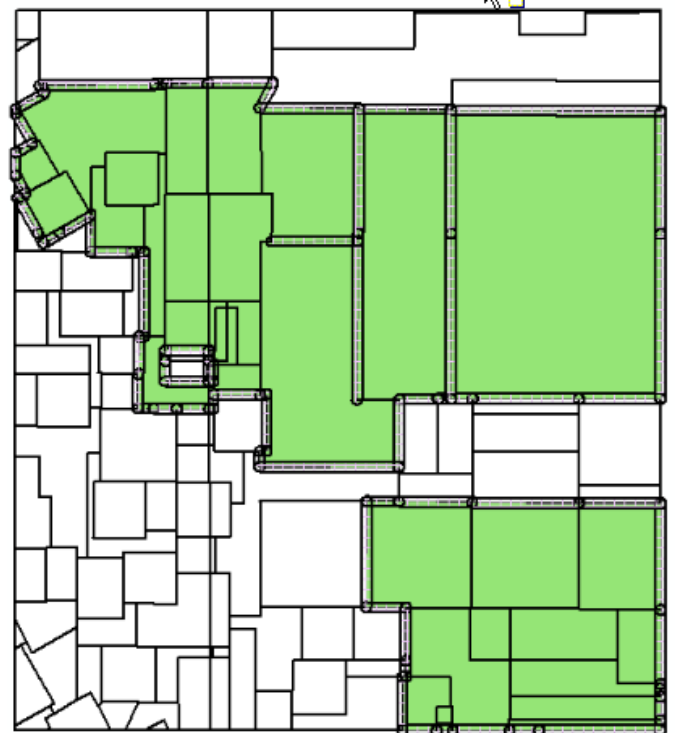
Field Planning

- Set different colors for well sticks for multiple formations in a single field plan.
- Save and conserve the polygon shape in the database after editing it with Node Display/Edit option.



Lease Planner

- Select both pre-existing and new tracts in a single selection, and add or remove tracts with multiple selections.
- Include setbacks within tracts in the lease layer, for a legally safer user experience.



System Requirements

Hardware (Minimum)

- Core i5/i7 or any Quad Core Processor
- 8 GB RAM
- NVIDIA GeForce or Quadro - 2GB video
- RAM
- CD-ROM drive

Hardware (Recommended)

- Core i5/i7 or any Quad Core Processor
- 16 GB RAM or greater
- NVIDIA GeForce or Quadro - 4GB video RAM
- DVD-RW drive

Software

- Microsoft® .NET 4.5.1
- Microsoft® DirectX 11

Operating System(s)

- Windows®7 Professional x64
- Windows®7 Enterprise x64
- Windows®7 Ultimate x64
- Windows® 10 Professional x64
- Windows® 10 Enterprise x64